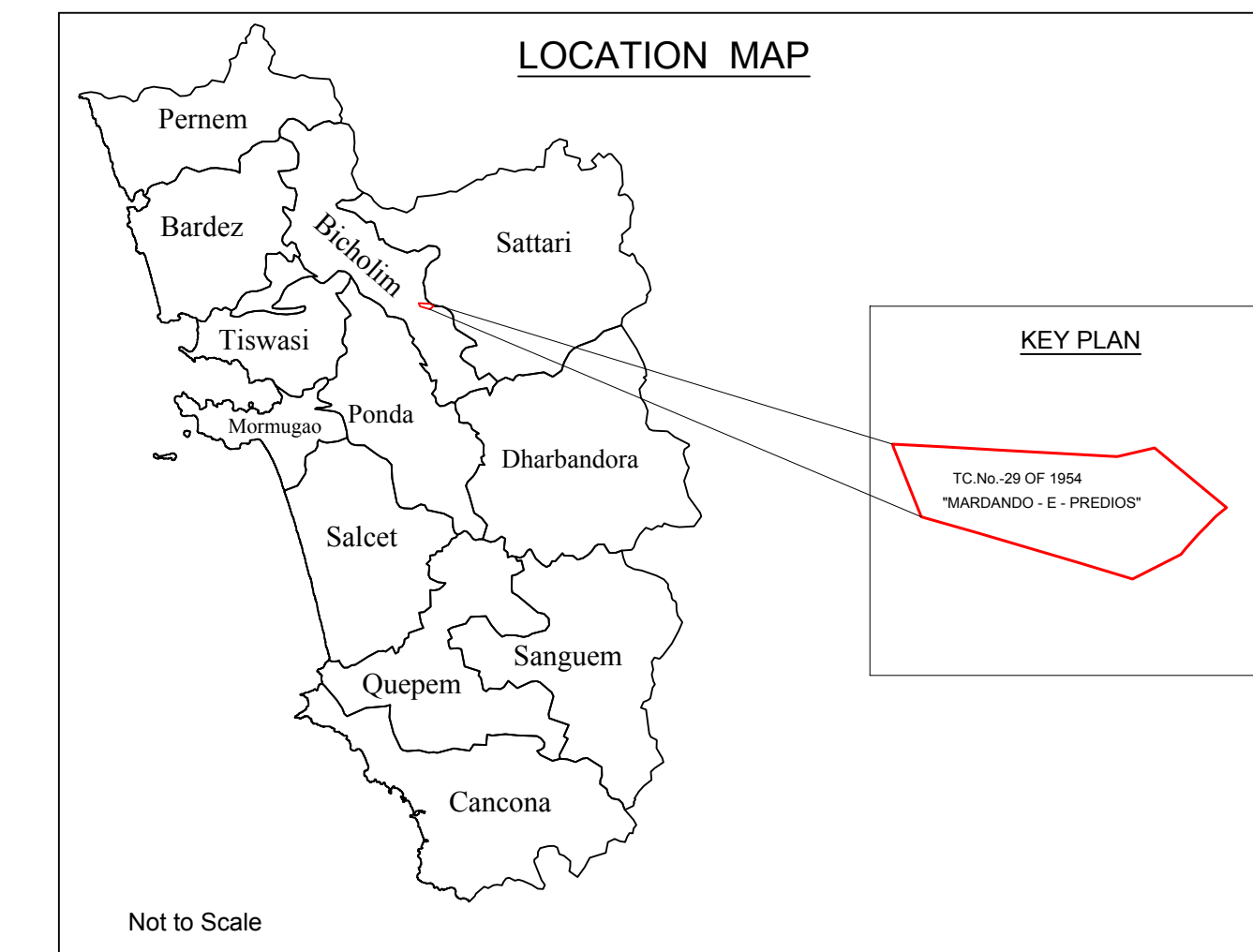
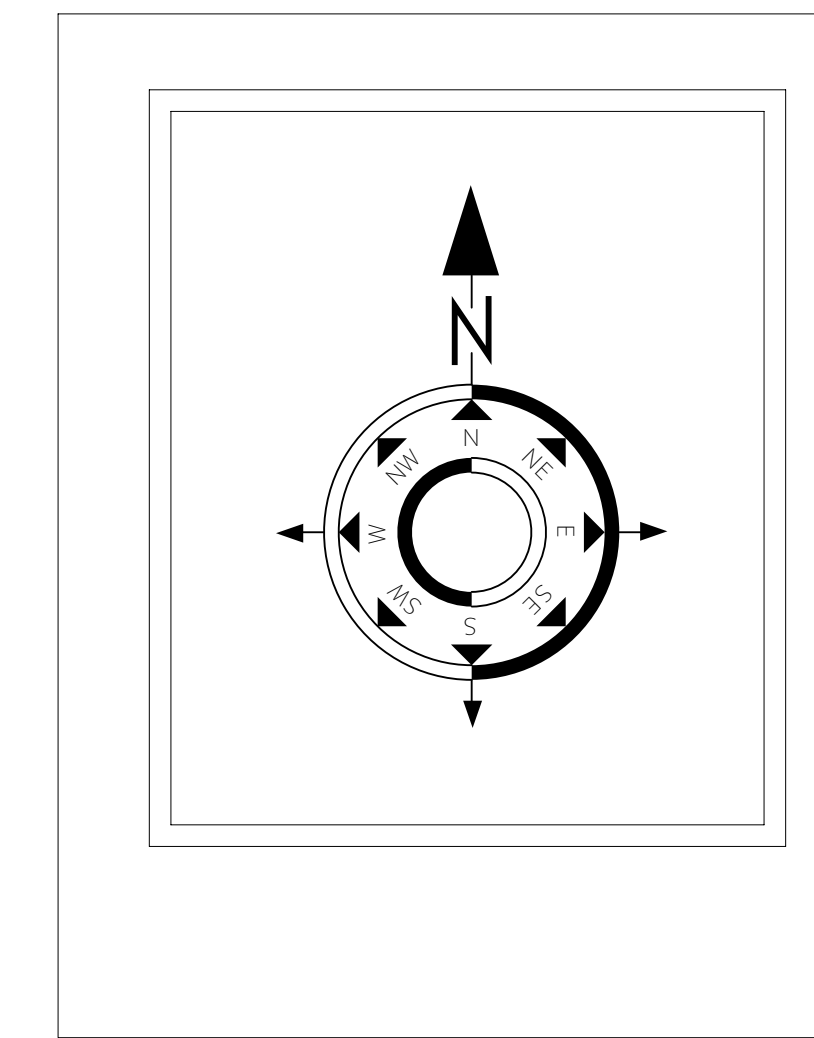
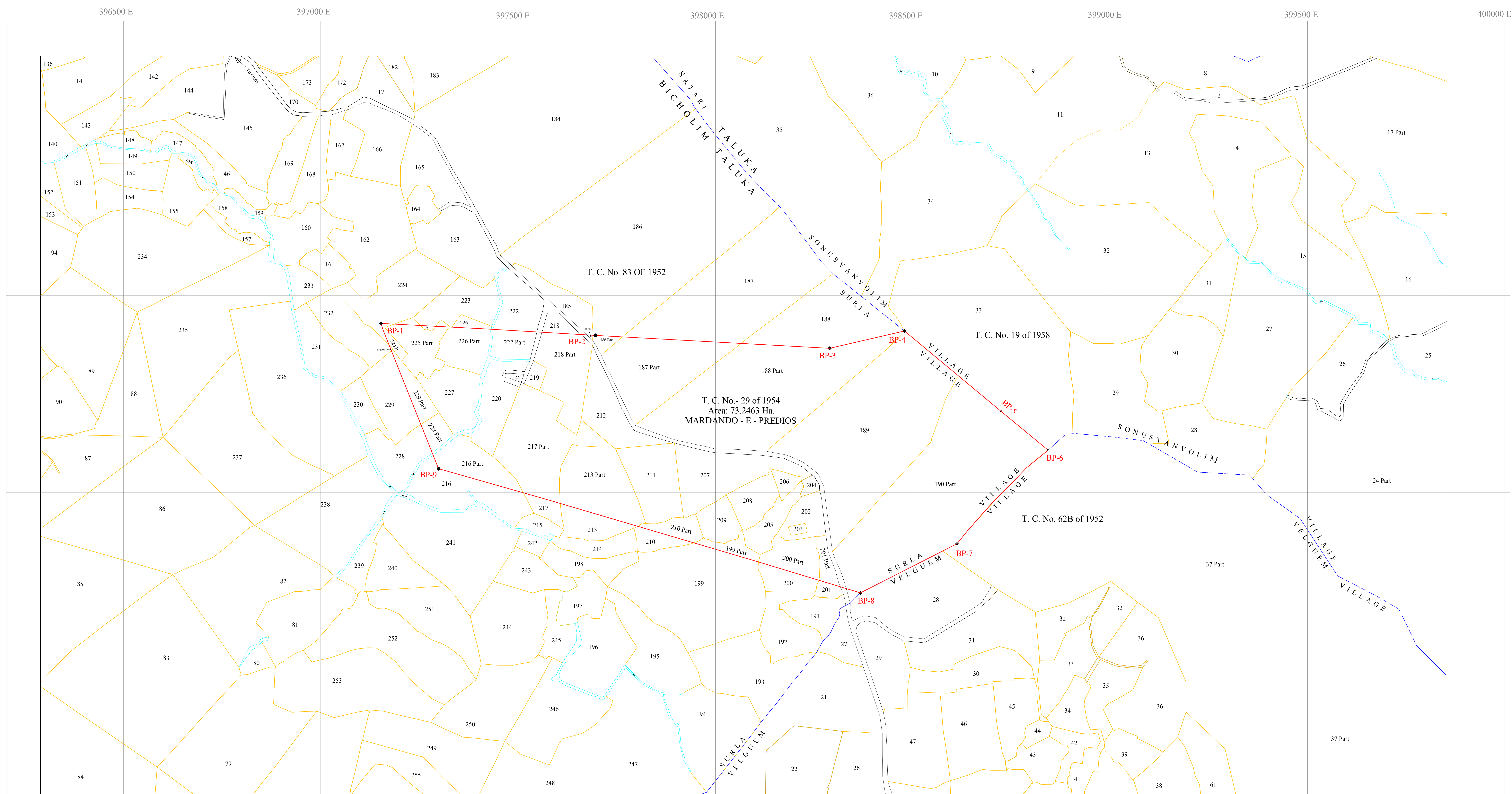


PLAN SHOWING LEASE BOUNDARY OF T. C. No. 29/54 ON GEOREFERENCED & VECTORISED CADESTRAL MAP
SITUATED IN VILLAGE SURLA, BICHOLIM TALUKA OF NORTH GOA DIST., GOA



MAP DATUM : WGS 84
PROJECTION : UTM, Zone: 43 North

**Geo Referenced and Vectorised Cadastral Map of
T. C. No.29 OF 1954**

Lease Name: MARDANDO - E - PREDIOS
Lessee: V.M. SALGAOCAR & BRO. PVT. LTD.
Location: Situated in Village Surla of Bicholim Taluka, North Goa District, Goa State.

Area : 73.2463 Ha.

B.P.No.	LATITUDE	LONGITUDE	EASTING	NORTHING
1	15° 30' 41.3091" N	74° 02' 27.8454" E	397152.6000	1715128.8320
2	15° 30' 40.3996" N	74° 02' 46.0873" E	397696.0460	1715098.4580
3	15° 30' 39.4211" N	74° 03' 06.0043" E	398289.3310	1715065.7560
4	15° 30' 40.8771" N	74° 03' 12.3632" E	398478.9900	1715109.6600
5	15° 30' 34.2995" N	74° 03' 20.5929" E	398723.3000	1714906.4580
6	15° 30' 31.1035" N	74° 03' 24.6213" E	398842.8910	1714807.7200
7	15° 30' 23.3571" N	74° 03' 16.9106" E	398612.1030	1714570.6970
8	15° 30' 19.2712" N	74° 03' 08.7145" E	398367.3430	1714446.2230
9	15° 30' 29.3556" N	74° 02' 32.7956" E	397298.5070	1714760.8590

SURVEY NUMBER WISE AREA WITHIN MINING LEASE					
Village	Survey No.	Area (Ha.)	Village	Survey No.	Area (Ha.)
Surla	188 Part	0.0600	Surla	212	1.9025
Surla	186 Part	0.1600	Surla	213 Part	3.1788
Surla	187 Part	4.9600	Surla	216 Part	1.5225
Surla	188 Part	9.8100	Surla	217 Part	4.3875
Surla	189	12.3600	Surla	218 Part	2.3457
Surla	190 Part	9.9600	Surla	219	0.2575
Surla	199 Part	0.4607	Surla	220	1.6375
Surla	200 Part	1.1976	Surla	221	0.0725
Surla	201 Part	0.4212	Surla	222 Part	0.7664
Surla	202	0.8975	Surla	223 Part	0.0312
Surla	203	0.1025	Surla	224 Part	0.1993
Surla	204	0.1625	Surla	225 Part	1.3216
Surla	205	0.9675	Surla	226 Part	1.2538
Surla	206	0.3075	Surla	227	1.7500
Surla	207	2.8425	Surla	228 Part	0.4744
Surla	208	1.1275	Surla	229 Part	0.6664
Surla	209	0.9200	Surla	232 Part	0.0035
Surla	210 Part	0.6398	Road		1.3856
Surla	211	2.3375	Nulla		0.3535
			TOTAL		73.2463

LEGEND	
	LEASE BOUNDARY POINTS

SURVEYED & PREPARED BY
M/s. GEOFINY TECHNOLOGIES (P) LIMITED
No.352/1B, RAJIV GANDHI SALAHOIRI, TAMBARAM TALUK,
CHENNAI-600 119.

Empanelled by
Directorate of Mines and Geology
Govt of GOA, PANAJI
Vide order no/01/593/10-mines/203 Dated: 05/04/2013
Survey carried-out on 16th May 2013

CERTIFICATE
This is to certify that the Mining lease boundary pillars of T.C.No.29 of 1954 have been surveyed using DGPS (Differential Global Positioning System), based up on the Total Station Survey conducted earlier.

Mr. B. Unnikrishnan
(Mines Manager)

CERTIFICATE
This is to certify that the boundary pillars of T. C. No. 29 OF 1954 as show by Mr. B. Unnikrishnan Nair (Mines Manager) has been surveyed by our team led by Mr. K. Velmurugan using DGPS. The lease map and pillar locations have been verified, survey conducted and plans prepared as per requirement of IBM circular No.2 /2010 Dated 06-04-2010.

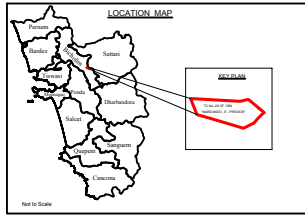
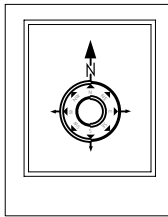
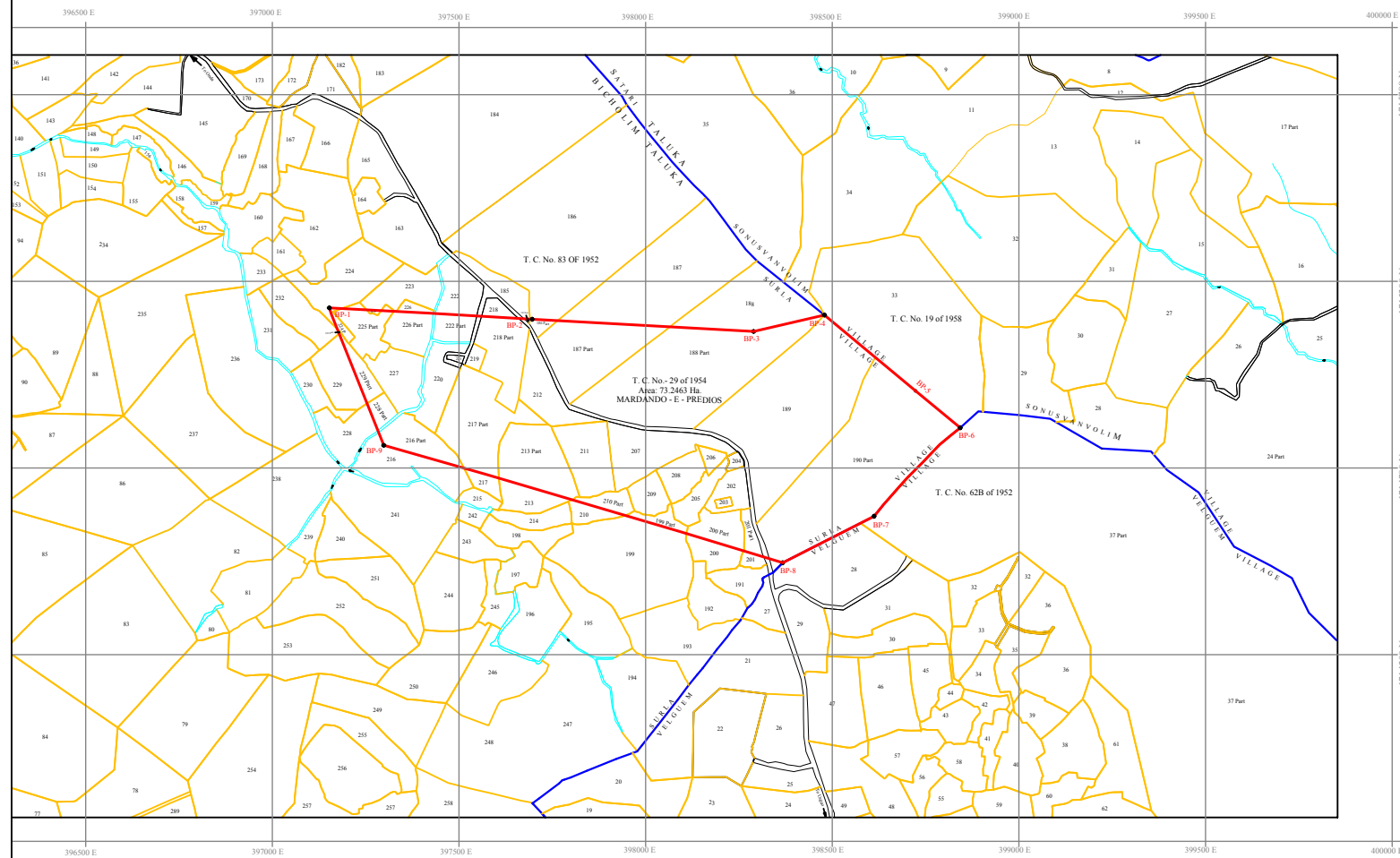
For Geofiny Technologies (P)
Mr. K. Velmurugan

Directorate of Mines & Geology, Panaji - Goa

Checked By

Certified By

PLAN SHOWING LEASE BOUNDARY OF T. C. No. 29/54 ON GEOREFERENCED & VECTORISED CADESTRAL MAP SITUATED IN VILLAGE SURLA, BICHOLIM TALUKA OF NORTH GOA DIST., GOA



MAP DATE: 02.04.14
PROJECT NO: 153A/2014/04

Geo Referenced and Vectorised Cadastral Map of T. C. No.29 OF 1954
 Lessee Name: MARDANDO - E - PREDIOS
 Lessee: V.M.SALGOCAR & BRO. PVT. LTD.
 Location: Situated in Village Surla of Bicholim Taluka, North Goa District, Goa State
 Area : 73.2463 Ha.

SURVEYED & PREPARED BY
 M/s. GEOFINX TECHNOLOGIES (P) LIMITED
 No.352/18, RUBY GANESH SALASOMBE, TAMBARAM TALEUK, CHENNAI-600 119.
Empanelled by
 Directorate of Mines and Geology
 Govt of GOA, PANAJI
 Vide order no 01/593/10-mine/2013 Dated: 05/04/2013
 Survey carried-out on 16th May 2013

CERTIFICATE
 This is to certify that the Mining lease boundary pillars of T.C.No.29 of 1954 have been surveyed using DGPS (Differential Global Positioning System), based up on the Total Station Survey conducted earlier.
 Mr. B. Umakrishnan Nair
 (Mines Manager)

CERTIFICATE
 This is to certify that the boundary pillars of T. C. No. 29 OF 1954 as shown by Mr. B. Umakrishnan Nair (Mines Manager) has been surveyed by our team led by Mr. K.Vinayagan using DGPS. The lease map and pillar locations have been verified, survey conducted and plans prepared as per requirement of IBM circular No.2 /2010 Dated 06-04-2010.
 For Geofinx Technologies (P) Ltd.
 Mr. K. Vinayagan

BP No.	LATITUDE	LONGITUDE	EASTING	NORTHING
1	13° 38' 41.9887" N	74° 02' 27.8464" E	397192.6669	1715228.8529
2	13° 38' 40.5996" N	74° 02' 46.9877" E	397696.0666	1715398.4000
3	13° 38' 38.4211" N	74° 02' 46.9847" E	398209.1318	1715361.7588
4	13° 38' 40.8777" N	74° 02' 12.3627" E	398478.9908	1715189.6689
5	13° 38' 44.2897" N	74° 02' 20.5827" E	398723.9008	1714966.4000
6	13° 38' 31.8837" N	74° 02' 24.4237" E	398642.8918	1714887.7500
7	13° 38' 23.8777" N	74° 02' 16.6807" E	398611.9108	1714857.6975
8	13° 38' 18.2712" N	74° 02' 08.7487" E	398267.1428	1714846.2250
9	13° 38' 20.3367" N	74° 02' 32.7867" E	397296.6078	1714794.6000

Village	Survey No.	Area (Ha.)	Village	Survey No.	Area (Ha.)
Marda	197/200	4.9908	Marda	222/200	4.4201
Marda	197/200	4.9908	Marda	223/200	4.3206
Marda	197/200	4.9908	Marda	224/200	4.1244
Marda	197/200	4.9908	Marda	225/200	4.0204
Marda	197/200	4.9908	Marda	226/200	4.1244
Marda	197/200	4.9908	Marda	227/200	4.1244
Marda	197/200	4.9908	Marda	228/200	4.1244
Marda	197/200	4.9908	Marda	229/200	4.1244
Marda	197/200	4.9908	Marda	230/200	4.1244
Marda	197/200	4.9908	Marda	231/200	4.1244
Marda	197/200	4.9908	Marda	232/200	4.1244
Marda	197/200	4.9908	Marda	233/200	4.1244
Marda	197/200	4.9908	Marda	234/200	4.1244
Marda	197/200	4.9908	Marda	235/200	4.1244
Marda	197/200	4.9908	Marda	236/200	4.1244
Marda	197/200	4.9908	Marda	237/200	4.1244
Marda	197/200	4.9908	Marda	238/200	4.1244
Marda	197/200	4.9908	Marda	239/200	4.1244
Marda	197/200	4.9908	Marda	240/200	4.1244
Marda	197/200	4.9908	Marda	241/200	4.1244
Marda	197/200	4.9908	Marda	242/200	4.1244
Marda	197/200	4.9908	Marda	243/200	4.1244
Marda	197/200	4.9908	Marda	244/200	4.1244
Marda	197/200	4.9908	Marda	245/200	4.1244
Marda	197/200	4.9908	Marda	246/200	4.1244
Marda	197/200	4.9908	Marda	247/200	4.1244
Marda	197/200	4.9908	Marda	248/200	4.1244
Marda	197/200	4.9908	Marda	249/200	4.1244
Marda	197/200	4.9908	Marda	250/200	4.1244
Marda	197/200	4.9908	Marda	251/200	4.1244
Marda	197/200	4.9908	Marda	252/200	4.1244
Marda	197/200	4.9908	Marda	253/200	4.1244
Marda	197/200	4.9908	Marda	254/200	4.1244
Marda	197/200	4.9908	Marda	255/200	4.1244
Marda	197/200	4.9908	Marda	256/200	4.1244
Marda	197/200	4.9908	Marda	257/200	4.1244
Marda	197/200	4.9908	Marda	258/200	4.1244
Marda	197/200	4.9908	Marda	259/200	4.1244
Marda	197/200	4.9908	Marda	260/200	4.1244
Marda	197/200	4.9908	Marda	261/200	4.1244
Marda	197/200	4.9908	Marda	262/200	4.1244
Marda	197/200	4.9908	Marda	263/200	4.1244
Marda	197/200	4.9908	Marda	264/200	4.1244
Marda	197/200	4.9908	Marda	265/200	4.1244
Marda	197/200	4.9908	Marda	266/200	4.1244
Marda	197/200	4.9908	Marda	267/200	4.1244
Marda	197/200	4.9908	Marda	268/200	4.1244
Marda	197/200	4.9908	Marda	269/200	4.1244
Marda	197/200	4.9908	Marda	270/200	4.1244
Marda	197/200	4.9908	Marda	271/200	4.1244
Marda	197/200	4.9908	Marda	272/200	4.1244
Marda	197/200	4.9908	Marda	273/200	4.1244
Marda	197/200	4.9908	Marda	274/200	4.1244
Marda	197/200	4.9908	Marda	275/200	4.1244
Marda	197/200	4.9908	Marda	276/200	4.1244
Marda	197/200	4.9908	Marda	277/200	4.1244
Marda	197/200	4.9908	Marda	278/200	4.1244
Marda	197/200	4.9908	Marda	279/200	4.1244
Marda	197/200	4.9908	Marda	280/200	4.1244
Marda	197/200	4.9908	Marda	281/200	4.1244
Marda	197/200	4.9908	Marda	282/200	4.1244
Marda	197/200	4.9908	Marda	283/200	4.1244
Marda	197/200	4.9908	Marda	284/200	4.1244
Marda	197/200	4.9908	Marda	285/200	4.1244
Marda	197/200	4.9908	Marda	286/200	4.1244
Marda	197/200	4.9908	Marda	287/200	4.1244
Marda	197/200	4.9908	Marda	288/200	4.1244
Marda	197/200	4.9908	Marda	289/200	4.1244
Marda	197/200	4.9908	Marda	290/200	4.1244
Marda	197/200	4.9908	Marda	291/200	4.1244
Marda	197/200	4.9908	Marda	292/200	4.1244
Marda	197/200	4.9908	Marda	293/200	4.1244
Marda	197/200	4.9908	Marda	294/200	4.1244
Marda	197/200	4.9908	Marda	295/200	4.1244
Marda	197/200	4.9908	Marda	296/200	4.1244
Marda	197/200	4.9908	Marda	297/200	4.1244
Marda	197/200	4.9908	Marda	298/200	4.1244
Marda	197/200	4.9908	Marda	299/200	4.1244
Marda	197/200	4.9908	Marda	300/200	4.1244

LEGEND	
[Symbol]	LEASE BOUNDARY POINTS
[Symbol]	LEASE BOUNDARY
[Symbol]	VILLAGE BOUNDARY
[Symbol]	SURVEY No. BOUNDARY
[Symbol]	ROAD
[Symbol]	SURLA - RIVER
[Symbol]	STREAM

Directorate of Mines & Geology, Panaji - Goa

Checked By	Certified By
Surveying Officer	Director of Mines & Geology

